

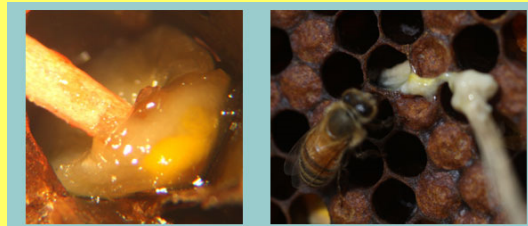
40 Years of Successful Isolated Bee Breeding



John Davies
Chairman - Better Bees WA

From Necessity Comes Success

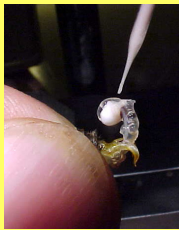
- The WA border was closed in the late 1970's to the importation of bees.
- Isolation and Quarantine restrictions have driven our success



EFB

1980-1990 Agriculture WA

- In 1980 bee stock was requested from beekeepers all over WA by the Agriculture Department
- They ran a closed breeding program for 10 years



AI

+



Open Mating

+



Field Testing

1990-Present Better Bees WA

- In 1990 industry took over the program
- Closed breeding program on Rottneest Island
- Stock selection, among other things, includes:



Production

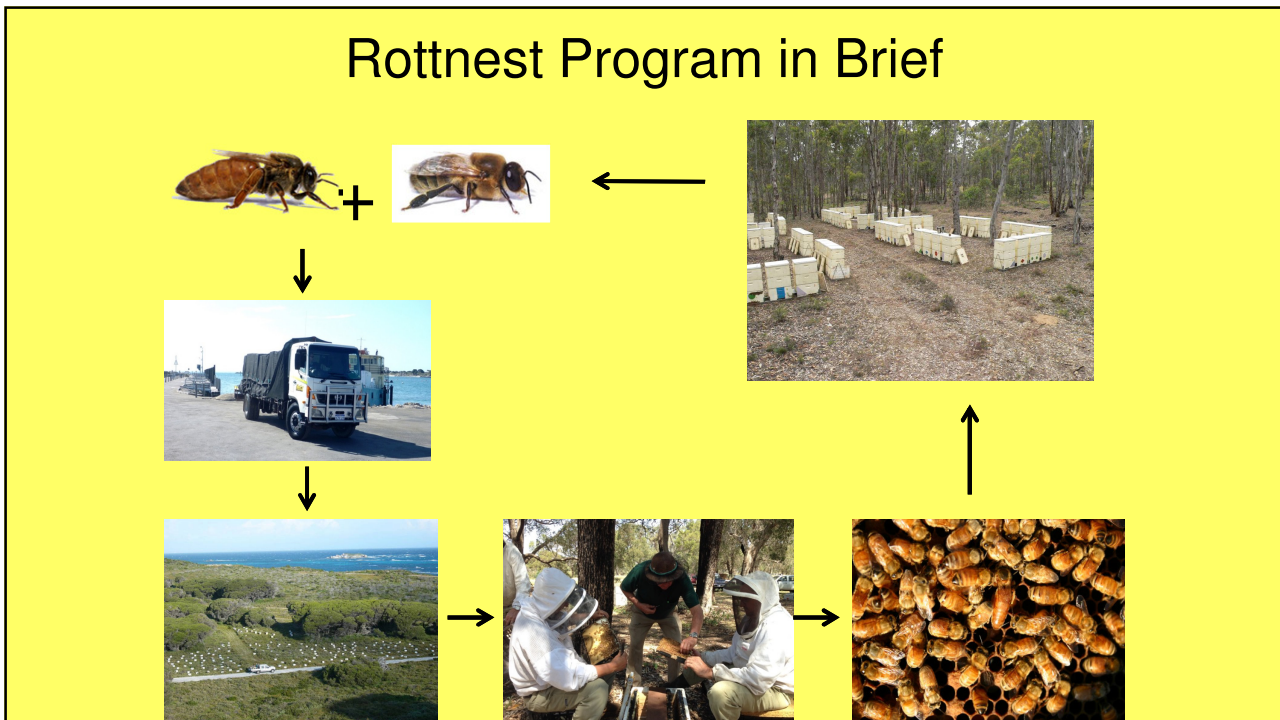


Brood Pattern



Temperament

Rottnest Program in Brief



Why Repeat for 30 Years?

- Positive consistent results
- High commercial success/production
- High quality breeders for replication



Production



Commercial Success



Replication

Why is the Program Successful?

- Commercially based program
- Production apiary selection pressures
- Breeding from the best hives



What we select for?

- Production, Brood Pattern, Temperament....
- Other desirable traits
- Each of the members have a different emphasis
- Resulting in generational improvement



The Program has its Challenges

- Normal business challenges
- Spring breeding conditions & nutrition
- Seasonal conditions & weather
- Maintaining lines
- Member dedication
- Genetic diversity



Further Measures of Success

- Membership demand
- Demand for breeders



Future Outlook for WA New Horizons

- Pollination
- Plantation Honey
- Speciality Honeys
- New Beekeepers
- New Ideas



The Future of Better Bees WA

- Good quality queens will always be demanded
- Rottnest will always be there



Thank you



Better Bees Western Australia Group